



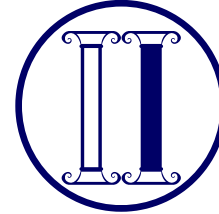
# Program Duration: 11 or 15 months

IMBA – Jan 26 Intake

## Making a Decision

# 11 months

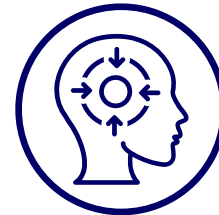
Term I and II



+ Labs



+ Concentrations



+ Final Integrative

Exercise (FIE) 11 months



- Concentrations and FIE at the same time
- Optional: Certifications, VLAB & Short Exchange

Graduation: **December 2026**

# 15 months

All previous components +



+ Electives Period

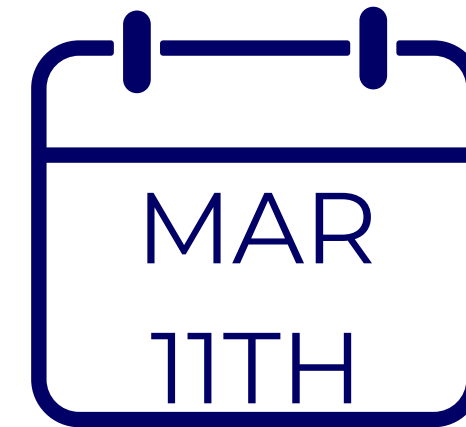
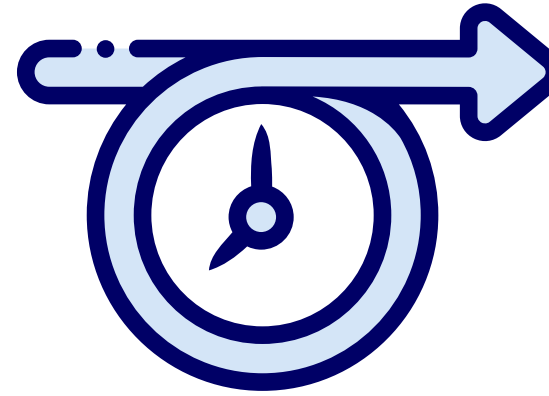
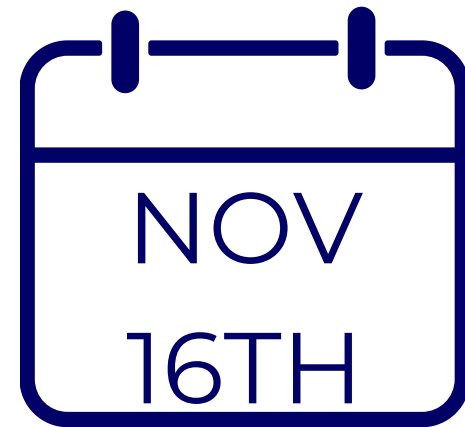


+ Final Integrative  
Exercise (FIE) 15 months

- Electives and FIE at the same time
- Optional: Certifications, VLAB & Short Exchange

Graduation: **March 2027**

# ELECTIVES PERIOD

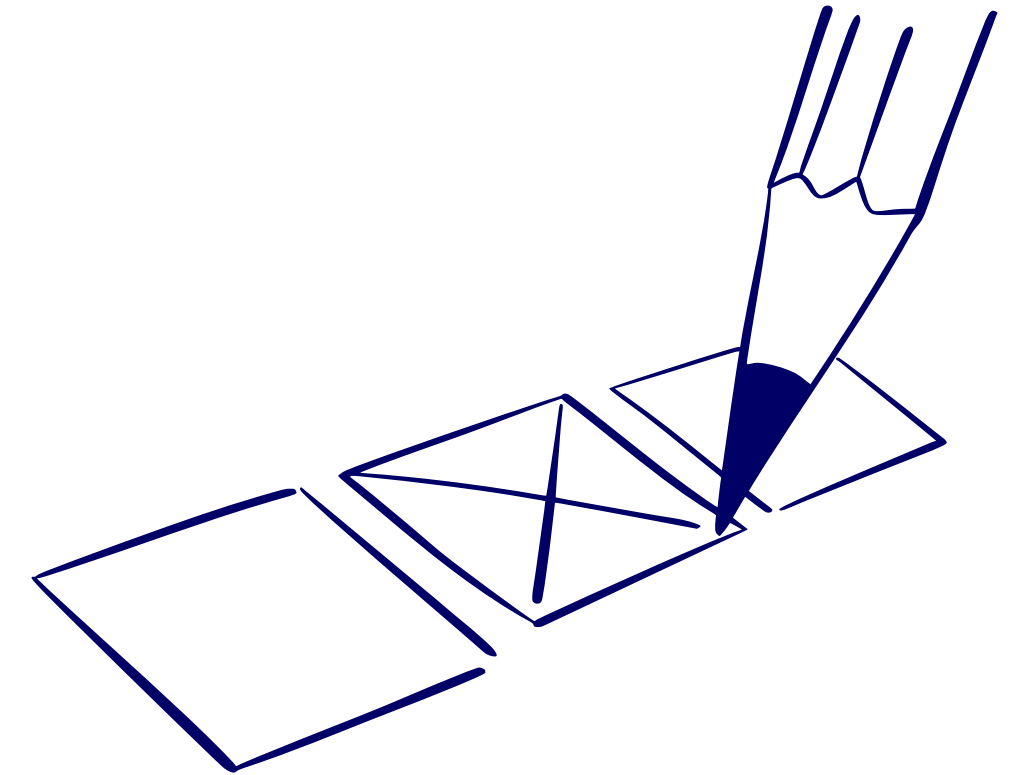


Three Options:

Option #1	Option #2	Option #3
5 electives courses at IE	Global Immersion Month (GIM) + 3 electives courses at IE	Long Exchange

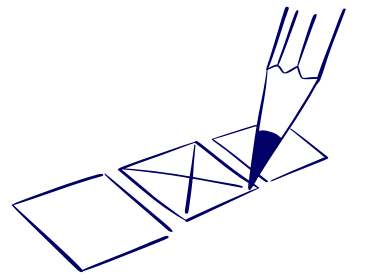
# ELECTIVES PERIOD - OPTION #1

- ▶ Dates: November 16th to March 11th
- ▶ 5 courses at IE Madrid campus
- ▶ Bidding process based on demand

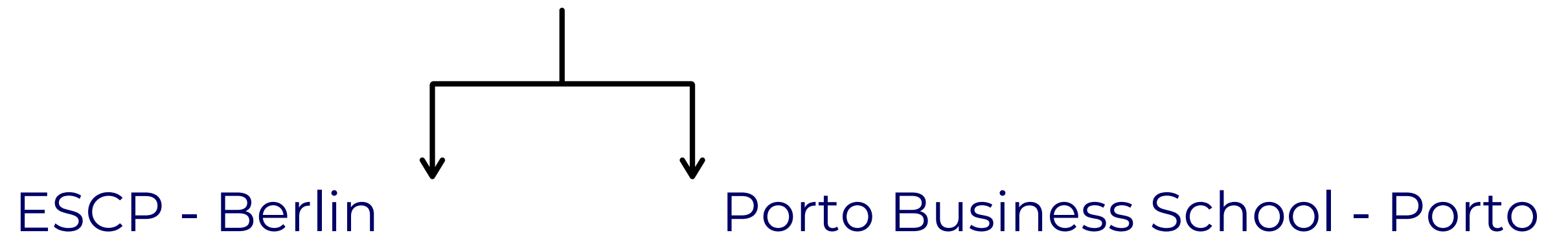


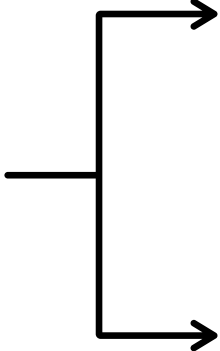
Check out the [list of electives](#) courses offered last year  
JUST FOR REFERENCE

# ELECTIVES PERIOD - OPTION #2

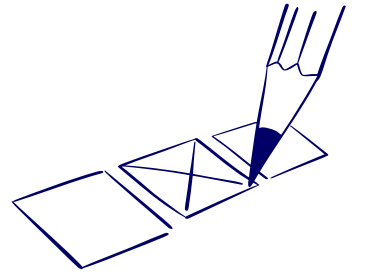


- ▶ Global Immersion Month (GIM) - Nov 16<sup>th</sup> to Dec 11<sup>th</sup>
- ▶ Four weeks of total immersion in two top destinations



- ▶ Two weeks in each university 
  - Academic
  - Practical  
(Company visits, cultural immersions, etc.)
- ▶ Limited spots available
- ▶ + 3 courses at IE (Dec 14<sup>th</sup> to March 11<sup>th</sup>)

# ELECTIVES PERIOD - OPTION #3



- ▶ Long Exchange at a partner school
- ▶ For further Information:  
Check the [International Exchange Guide](#) from April  
Attend the Info Session - May 18th
- ▶ Dates: Different partner schools might have different starting and ending dates for their programs - Classes could take place between January and May 2027

# MAKE A DECISION



Hard Deadline to select: **May 8<sup>th</sup> at 9:00 am**



How: form will be shared in the April 23<sup>rd</sup> newsletter.



More information and insights from alumni?  
**Attend the Q&A Coffee - April 29<sup>th</sup> from 3:00 to 4:00 pm**

**Important:** even though you made an initial selection during your admissions process, all students must confirm their selection (except **admitted** Dual Degree students).

QUESTIONS?