



Master of Laws IE Law School

September 2024

GRADUATE PROGRAM MANAGEMENT TEAM

llm-team@ie.edu

Office: Maria de Molina 31Bis – 8th floor,
Office 807



SOLEDAD ATIENZA
Dean IE Law School



EUGENIA CASTRILLÓN
Vice Dean IE Law School



Mª MERCEDES BLANCO
Executive Director
International Graduate
Programs



FRANCISCO TERRÓN
Associate Director



VALERIA ROSENHOLTZ
Associate Director



ANDREW GONZALES
Associate Director



CARMEN MORILLO
Coordinator



CONCHITA LOZANO
Assistant



CLARA GÓMEZ
Coordinator



TOBIAS PARKINSON
Assistant

ACADEMIC COORDINATORS

IBL



Sara Sánchez

sara.sanchez@ie.edu

[Profile Information](#)

IDR



Marco de Benito

marco.debenito@ie.edu

[Profile Information](#)

IPT



Javier Muñoz

jmm@faculty.ie.edu

[Profile Information](#)

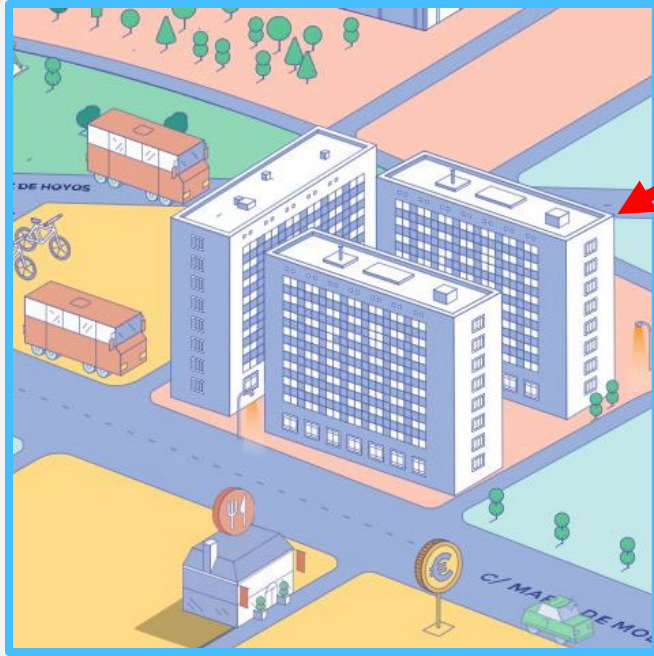
TAX



Giulio Allevato

giulio.allevato@ie.edu

[Profile Information](#)



LOCATION

Calle María de Molina 31 Bis

LLM G1: MMB-101 (*)

LLM G2: MMB-102 (*)

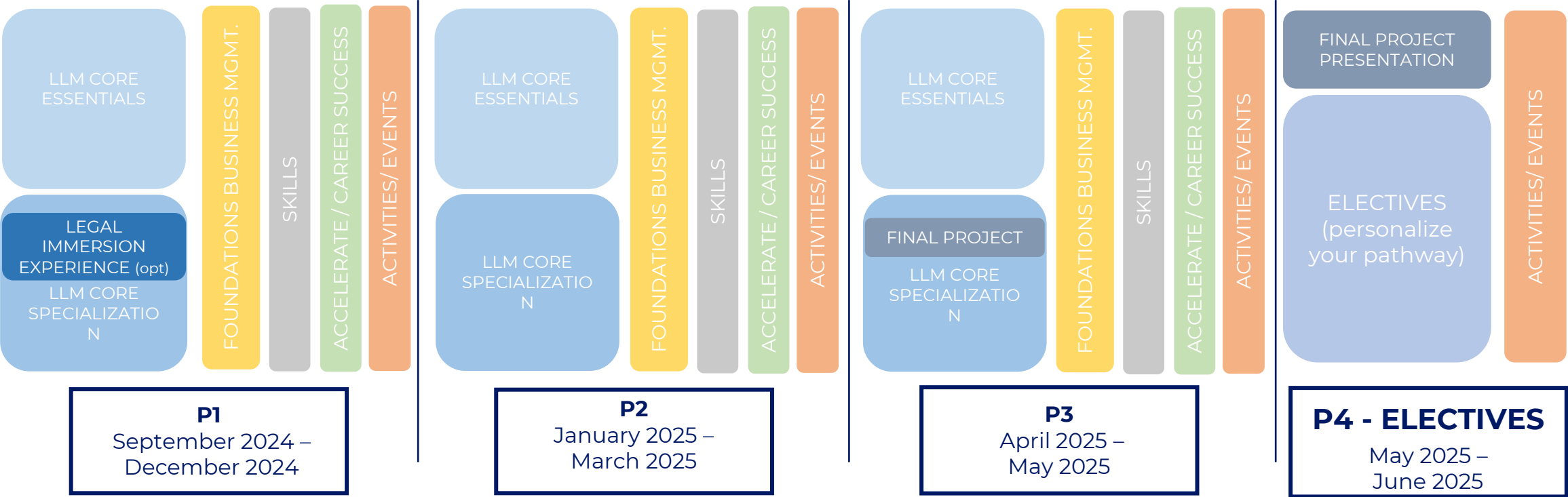


TIMETABLE

9:00-15:30 (*)

- Sessions are 80 min
- In-Person 100%
- Punctuality is fundamental
- Check BB Ultra every day



PROGRAM STRUCTURE




THE SPECIALIZATION PATHWAY!

Through the master, students keep completing the core essential courses and advance on their specialization


Jan '24 MIM- Sep '24 LLM: Covalidation Table

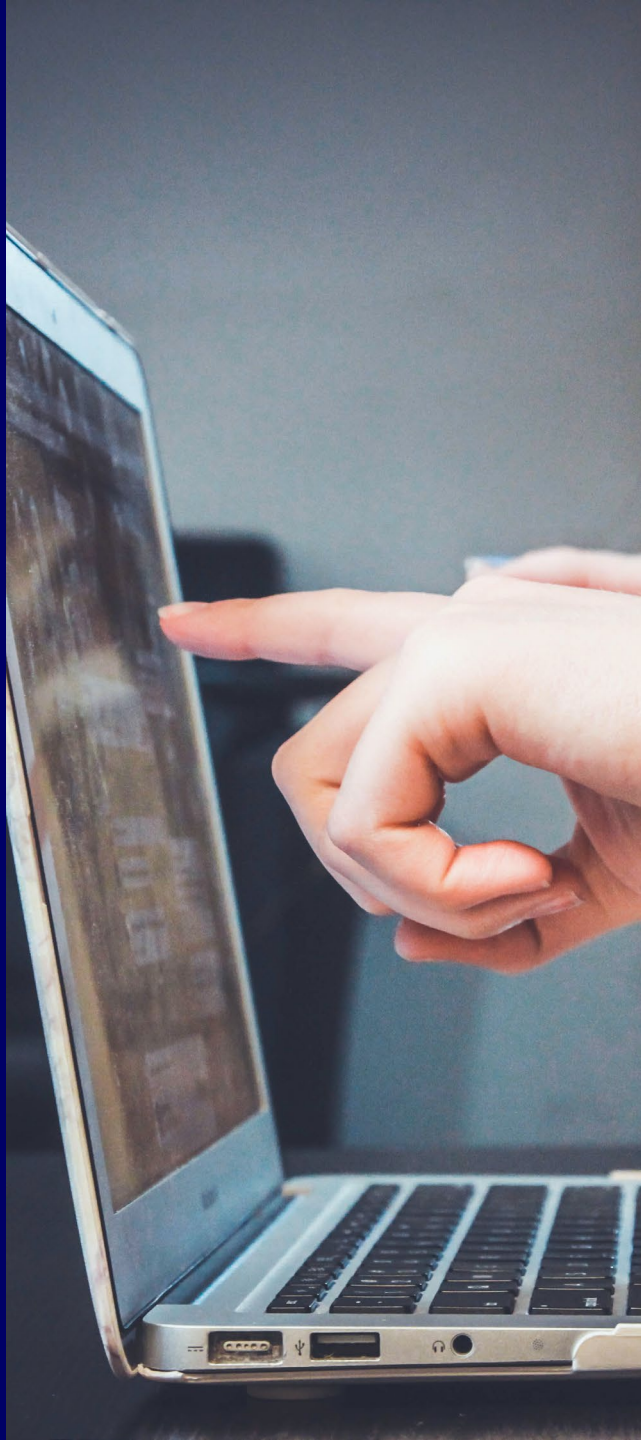
GRADE AND CREDIT RECOGNITION										
Program 1						Program 2				
Master in Management (MIM)						Master of Laws (LL.M.)				
Course Name	Term	Sessions	ECTS	Grading	Course Name	Term	Sessions	ECTS	Grading	
FINANCIAL REPORTING	1	15	2	Curve		FINANCIAL ACCOUNTING	1	15	4	Curve
ECONOMICS	2	20	4	Curve		GLOBAL ECONOMY	2	10	2	Curve
FINANCE	2	20	4	Curve		FINANCIAL MANAGEMENT: BUSINESS VALUATION	2	10	3	Curve
COMPETITIVE STRATEGY	2	20	4	Curve		STRATEGY & INNOVATION	3	10	3	Curve
TOTAL		75	14	N/A		TOTAL		45	12	N/A
Master in Management (MIM)						Master of Laws (LL.M.)				
Course Name	Term	Sessions	ECTS	(Recognized as MIM Electives)		Course Name	Term	No. Sessions	ECTS	
	N/A	60-75	Minimum of 8 ECTS			INTRODUCTION TO COMPARATIVE CORPORATE LAW	1	15	3	
						CONFLICT OF LAWS I: INTERNATIONAL LITIGATION	1	15	2	
						INTERNATIONAL CONTRACTS	1	15	3	
						INTERNATIONAL TAX FRAMEWORK	2	15	3	
TOTAL		60	11			TOTAL		60	11	

Jan '24 IMBA- Sep '24 LLM: Covalidation Table

GRADE AND CREDIT RECOGNITION										
Program 1						Program 2				
International MBA (IMBA)						Master of Laws (LL.M.)				
Course Name	Term	Sessions	ECTS	Grading	Course Name	Term	Sessions	ECTS	Grading	
FINANCIAL REPORTING & ANALYSIS	1	16	3	Curve		FINANCIAL ACCOUNTING	1	15	4	Curve
MANAGERIAL ACCOUNTING	2	16		Curve		GLOBAL ECONOMY	2	10	2	Curve
MANAGERIAL ECONOMICS	2	16	3	Curve		STRATEGY & INNOVATION	3	10	3	Curve
STRATEGY	2	16	3	Curve		FINANCIAL MANAGEMENT: BUSINESS VALUATION	2	10	3	Curve
FINANCIAL MARKETS	1	16	3	Curve						
CORPORATE FINANCE	2	16		Curve		TOTAL		45	12	N/A
TOTAL		96	12	N/A						
International MBA (IMBA)						Master of Laws (LL.M.)				
Course Name	Term	Sessions	ECTS	(Recognized as IMBA Electives)		Course Name	Term	Sessions	ECTS	
	Electives	90-105	Minimum of 12 ECTS		INTRODUCTION TO COMPARATIVE CORPORATE LAW	1	15	3		
					INTERNATIONAL CONTRACTS	1	15	3		
					EUROPEAN COMMON MARKET LAW	1	10	4		
					CONFLICTS OF LAWS II: LAW APPLICABLE	2	10	3		
					INTERNATIONAL DISPUTE RESOLUTION	2	10	3		
					INTERNATIONAL TAX FRAMEWORK	2	15	3		
TOTAL		75	19		TOTAL		75	19		

Sep '23 MIR- Sep '24 LLM: Covalidation Table

MIR			LLM	
Analysis of the International Economy	15 <u>sessions</u> – 3 ECTS		Global <u>Economy</u>	10 <u>sessions</u> – 2 ECTS



DAY TO DAY

1

ATTENDANCE POLICY

- Mandatory in-person attendance
- Punctuality
- Manage your attendance
- **> 20% absence = fail in the subject**

2

TEAMWORK

- All members share equal responsibility
- Documentation and organization of the work

TECHNOLOGICAL RESOURCES

1.

STUDENT PORTAL

- University Schedule
- Final Grades
- IT Support
- IE resources

[LINK](#)

2.

BLACKBOARD

- Academic Calendar!
- Syllabus & course materials
- Important announcements from Program Management
- Professors

[LINK](#)

3.

STUDENT GUIDE

- Everything you need to know about the program
- FAQs

[LINK](#)

CLASS REPRESENTATIVES

DELEGATE

- Communication
 - Students
 - Professors
 - Program Management
- Meetings with PM

ETHICS REP

- Will form part of the Ethics committee
- Promotes ethical conduct in class
- In charge of revising infraction and communicating them to PM



ACADEMIC PHILOSOPHY: CASE METHOD

ATTENDANCE

- > 20% absences = fail in the subject

CLASS PARTICIPATION

- Come prepared to participate
- Quality not quantity

TEAMWORK

- Shared responsibility
- Meetings with Program Management
- Time and workload management

EXAMS

- End of each course
- Formats vary oral exam, case, or surprise!

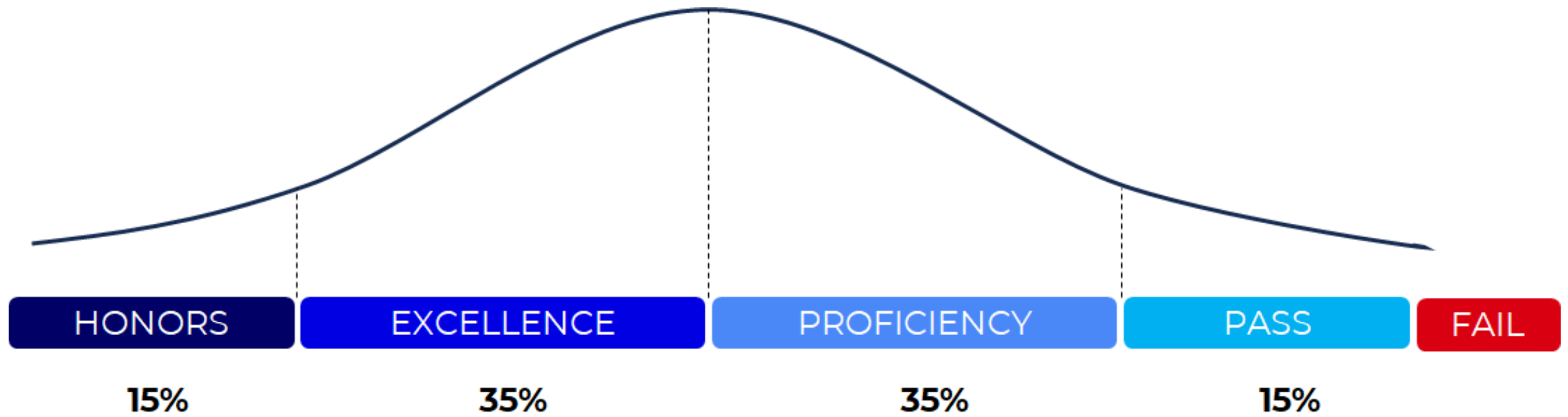
GRADING SYSTEM

QUALIFICATION	GRADE	NUMERICAL SCORE
Honors	4.00	10.00
Excellence	3.66	8.00
Proficiency	3.33	7.00
Pass	3.00	6.00
Low Pass	1.00	5.00
Fail	0.00	0.00-4.99

Extraordinary Call – LOW PASS

1.00

THE BELL CURVE





CONTACT US

DROP-IN

- Monday through Friday 9:00 to 18:00h
- IE Law School Program Management Team Office (MMB 807) – MM31 Bis – 8th floor
- Any questions/concerns: llm-team@ie.edu
Andrew Gonzales: andrew.gonzales@ie.edu
Tobias Parkinson: tobias.parkinson@ie.edu

Questions?