



Unusual situations demand exceptional professionals



# Letter from the Dean

---

*Welcome to IE Law School!*



IE Law School is a vibrant community of professors, practitioners and students from all over the world, united by the conviction that law offers a privileged entry point to understanding and improving our global and complex world.

During the last 40 years, IE Law School has consolidated itself as a national and international reference in training globally oriented law practitioners. This has been achieved through a combination of an extraordinarily rich and varied faculty, programs based on the case-method, active research centers that bring together scholars, practitioners and students, and sophisticated programs that count with the active

involvement of top civil servants and lawyers.

As the Dean of IE Law School, I am committed to maintaining and extending the prestige of this unique institution, working endlessly to ensure that it remains as a reference in the legal arena.

**Javier de Cendra**  
Dean of IE Law School

# Bachelors (LLB) Masters (LLM) Executive Education

---

*The school*

IE, created in 1973 and originally named Instituto de Empresa, is located in Madrid's Financial Center. At the same time that the MBA and Executive MBA programs started, our first Master of Laws (LLM), Master en Asesoría Jurídica, was launched.

IE Law School was formally established a few years later, expanding its portfolio of LLM programs.

Thanks to our 40 years as part of IE Business School, we have been able to integrate subjects like Business Administration in each of our legal programs through an MBA module, so that lawyers acquire all the knowledge and skills necessary to work effectively with their clients.

IE Law School offers different legal programs, adapted to the profile of each student and taking into account their professional objectives.

On the other hand, the more senior profiles with work experience find solutions to their needs within the area of Executive Education Law which provides more than 40 programs, national and international, with different formats and length (from 1 day to 6 months), covering all areas of law. Lawyers can update their skills, acquire the latest trends and practices and network with experts from across the globe.

With the creation of the Bachelor of Laws, IE Law School offers a thorough training to future lawyers at the University level. The Bachelor of Laws (LLB) at IE University distinguishes itself from other traditional law training, offering different itineraries in English or Spanish with two unique campuses in Madrid and Segovia (IE University).

Due to our agreements with prestigious foreign law schools and the fact that most of our programs are offered in English, the process of internationalization of IE Law School and its recognition beyond borders is unstoppable.



# Quick facts



**Belén Moro**

Spanish  
Regulatory & Fiscal Compliance at Deloitte Lawyers, Madrid, Spain

*"Obtaining the LLM at IE Business School has allowed me to acquire a methodology of analysis to confront situations that present themselves on a daily basis in the working world, reinforcing my self-confidence and improving my decision-making skills. The faculty presents you with real situations of the most important companies and law firms in the industry, which causes you to be able to merge into employment with top notch experience, which could only have been acquired through additional years of work. Working in groups and the connections you develop with your classmates force you to develop your teamworking skills, essential for the business world. I can now apply the experiences I earned during my Master on a daily basis at Deloitte Lawyers."*

## 3 Unique Campuses: IE Law School Madrid, IE University Segovia, & Our Online Campus



The IE Law School campus is located in the heart of Madrid, a vibrant city where students have the opportunity to thoroughly live a unique experience, enjoying everything the city has to offer. Of course, this includes Spanish language, the native language of over 500 million people worldwide and the second language of global business. Madrid is the financial capital of Spain and the location of the IE Law School Campus allows professionals to teach, while continuing to exercise their profession.



More than **90 nationalities** on campus • **13 international** exchange **agreements**  
More than **1.000 events** organized per year • **27 offices** worldwide • **50% Women**  
**Comprehensive training:** Bachelor of Laws, Master of Laws (LLM), Executive Education Law

To learn more, visit:  
[www.ie.edu/madrid](http://www.ie.edu/madrid)



# International recognition



According to the list published annually by the Financial Times, LLM programs at IE Law School are among the best legal training programs in the world.

Additionally, IE is recognized by the four major legal and business training accrediting agencies and associations in the world, and has been named one of the leading business schools in the world by prestigious international publications.



Our LLMs have been approved and adapted to the new European Higher Education Area, according to the Bologna Process. Due to this, once the program is over, students have the opportunity to obtain their degree at IE University.

For more information about your program of interest, contact [admissions.law@ie.edu](mailto:admissions.law@ie.edu)



# Partnerships

IE Law School collaborates with prestigious academic institutions worldwide, offering exchange programs, dual degrees, joint programs and other initiatives. The main goal of these partnerships is to further enrich the overall learning experience of students and teachers from IE and the associated institutions.

The Dual LLB Bachelor of Laws and Bachelor in Civil and English Law in collaboration with **The University of Law** provides IE University students with both a qualifying Spanish and English law degree.



IE Law School's partnership with **Northwestern University School of Law** makes possible this prestigious Executive LLM for working lawyers.



**LawWithoutWalls** engages those with a stake in the future of Law and provides them with a powerful vehicle for innovation and change.



**Law School Global League:** Along with 23 other Law Schools from all over the world, IE Law School is part of the Law Schools Global League which aims to work more closely together in areas of teaching and research.



## USA

- Northwestern University School of Law (Chicago, Illinois)
- William & Mary School of Law (Williamsburg, Virginia)
- U. of California Hastings College of the Law (San Francisco, California)
- University of Virginia School of Law (Charlottesville, Virginia)
- University of Miami (Miami, Florida)



## Latin America

- Fundação Getulio Vargas Law School (São Paulo, Brazil)



## Europe

- Tilburg Law School (Tilburg, Netherlands)
- Católica Global School of Law (Lisbon, Portugal)
- Science Po (Paris, France)



## Asia

- University of Hong Kong (Hong Kong, China)
- National University of Singapore Faculty of Law (Singapore)
- National Tsing Hua University (Hsinchu City, Taiwan)
- Jindal Global Law School (NCR of Delhi, India)





# Collaborators

IE Law School has a long and close relationship with a number of law firms and leading corporations that recognize IE Law School's excellence.

**Professional Experience Week:** During one week\* students are placed within one of a number of highly reputable law firms in Madrid to work on a project designed specifically by partners and associates. By replicating the real-world work of attorneys in a firm, the students receive not only excellent experiential education but also invaluable opportunities to make contacts within the legal market.

**Internships:** IE Law School organizes internships for the students of the Tax LLM (Master en Asesoría Fiscal de Empresas) and of the Dual Masters in Lawyering (Dobles Masters en Abogacía) within the legal Spanish framework to practice Law in Spain. In addition, IE Law School students benefit from IE strategic agreements with its corporate partners to enhance their careers.

*Among others...*

URÍA MENÉNDEZ

CLIFFORD  
CHANCE

ALLEN & OVERY



PEREZ-LLORCA

Deloitte.

LATHAM & WATKINS LLP

BAKER & MCKENZIE



GOMEZ-ACEBO & POMBO

CUATRECASAS, GONÇALVES PEREIRA

FRESHFIELDS BRUCKHAUS DERINGER



ONTIER



ERNST & YOUNG

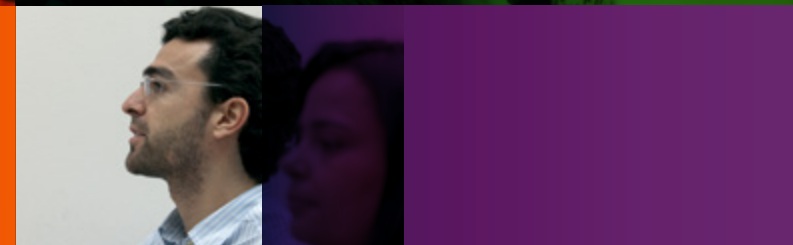
\* Two weeks for those students enrolled in the LLM in International Business Law.



**Dr. Werner Jahnel**

Lawyer at LALIVE, Zurich, Switzerland  
Professor at IE Law School

*"Given their different legal and cultural backgrounds, the students are inspired to participate in lively discussions to defend their own legal systems. The program gives the students the possibility to get in touch with the real world which might open a door for their future career. In fact I have already hired one of the best former students for my firm in Switzerland."*



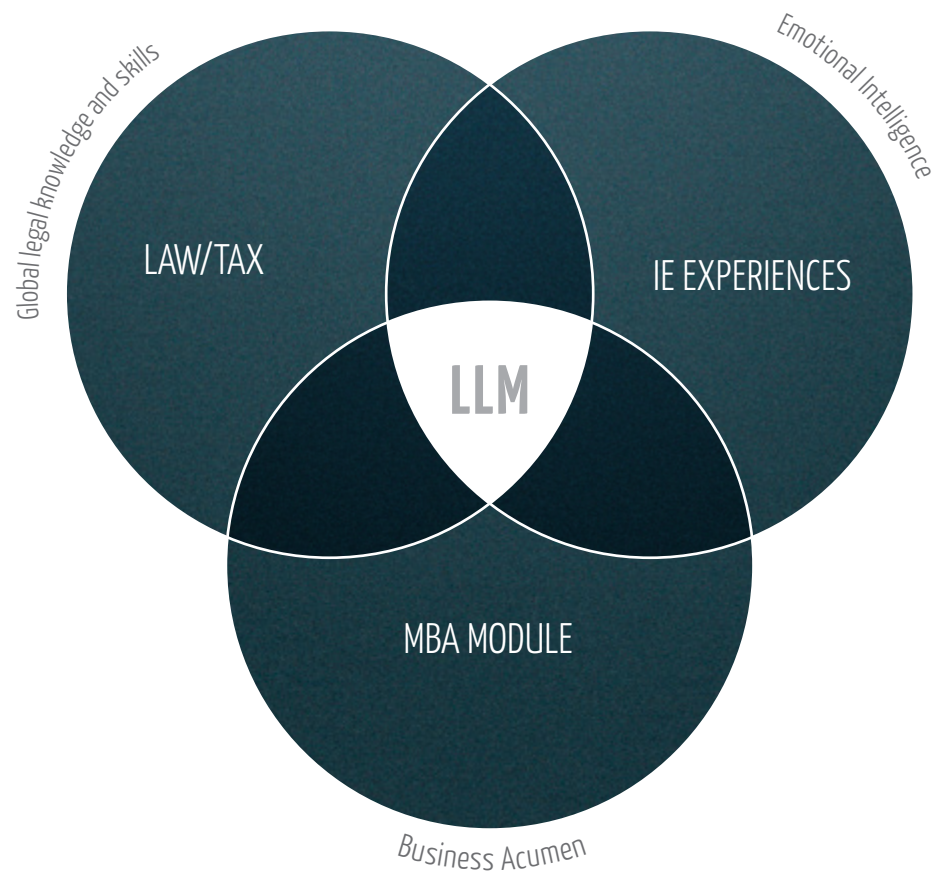
# Our LLMs

	PROGRAM	FORMAT				CAMPUS			DURATION				LANGUAGE		PROFESSIONAL EXP.		
		Full-time	Part-time	Blended (online + on-campus)		Madrid	Chicago	Online	9 months	10 months	13 months	15 months	Spanish	English	Not required	Minimum 2 years	Minimum 3 years
Looking for a full-time program in Spanish?	Master en <b>Derecho Transnacional de los Negocios (LLM)</b>	•				•				•			•		•		
	Master en <b>Asesoría Fiscal de Empresas (LLM)</b>	•				•				•			•		•		
Looking for a full time program in English?	<b>LLM in International Business Law</b>	•				•				•				•	•		
Looking to improve your training and keep working at the same time?	Master en <b>Asesoría Jurídica de Empresas (LLM) Part-time</b>		•			•		•			•		•			•	
	<b>Executive LLM with Northwestern University School of Law</b>			•		•	•	•	•					•			•
Want to practice law in Spain (complying with Spanish legal requirements)?	<b>Doble Master en Abogacía y Asesoría Jurídica de Empresas (LLM)</b>	•				•						•	•		•		
	<b>Doble Master en Abogacía y Asesoría Fiscal de Empresas (LLM)</b>	•				•						•	•		•		
	<b>Doble Master en Abogacía y Asesoría Jurídica de Empresas- Bilingüe (LLM)</b>	•				•						•	•	•	•		
	<b>Doble Master en Abogacía, Emprendimiento y Tecnología (LLM)</b>	•				•						•	•		•		



# Comprehensive training

We offer our students much more than concepts and facilitate them a way to approach new realities through the development of skills and tools during the academic year. We believe that global, dynamic and comprehensive training is the key to success for tomorrow's professionals.



- **Law/Tax:** Students work on case studies that truly reflect the real work of lawyers and advisers in global firms, specialized in Spanish and International law.
- **MBA Module:** We select the most relevant subjects from IE Business School's MBA to adapt legal activity to the business management field. Upon completion of the MBA module, all students receive an MBA Certificate from IE Business School.
- **IE Experiences:** Students enjoy and personally experience a new way of understanding law through professional workshops, seminars, conferences, a week of immersion in an office, participating in a semester abroad, etc\*.
- **IE Your Way:** In addition, full-time LLM students can freely add value to their program by choosing the subjects which they would like to study in order to complete their training through electives, specializations, research, European law module, etc.\*

\* some of these experiences are only available for full-time LLMs.





# Dual Degrees



IE Law School offers students the possibility to continue their education and acquire knowledge in other areas in order to train them to become an integral adviser.

## *IE Law School + IE Business School*

As a response to the world's constant changes and the market's need for well-trained professionals IE has designed the **Dual Degree International MBA + Master of Laws (LLM)** and the **Dual Degree Master in Management + Master of Laws (LLM)**, two innovative programs meant for high performing individuals seeking to combine the benefits of profound knowledge in business law, with solid management skills.

To learn more, visit:

<http://www.ie.edu/law-school/degrees/dual-degrees>





# Executive Education in IE Law School

**IE Law School's Executive Education** programs offer training for professionals in the legal and tax sector, based on the academic excellence and innovation of the School. In today's revolutionizing legal market, the way that the law is taught and practiced makes a difference. Our courses are designed to equip our students with the necessary tools of specialization, leadership and innovation so that they are able to become leaders in the Spanish and International legal markets.

More than 35 years working closely with IE Business School allow us to integrate management workshops into our programs, including directive, negotiation and coaching skills – among others – so that participants acquire all necessary knowledge and abilities to work more efficiently with their clients.

Our professors offer a practical, applied, and international perspective that is up to date with current events. Our faculty's vision and experience enables us to respond to the global and complex challenges that today's lawyers are facing.

The participants of our programs are professionals with an average of 5 years of experience in their fields, so that they are able to contribute with meaningful experiences and engage in constructive discussions during classes, where present challenges will be presented.

**For more information** about our program portfolio, we invite you to visit our website: [www.ie.edu/executive-law-school](http://www.ie.edu/executive-law-school)

You may also email: [lawschool.execed@ie.edu](mailto:lawschool.execed@ie.edu) or call: +34 915 689 555.



**Murat Ünal**  
CEO and Founder of Sonean

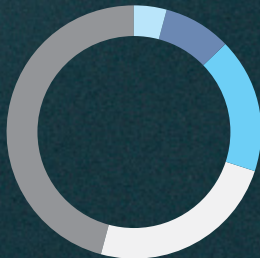
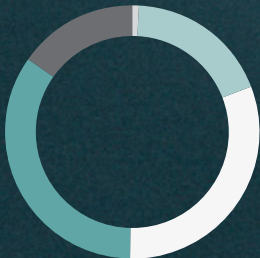
*"My experience throughout the courses and the interaction with professors at IE was outstanding. The IE Law School team is very professional and customer oriented, with a focus on quality – a unique experience!"*



**Domingos Cruz**  
Partner at CCA Advogados / Ontier Portugal

*"IE Law School Executive Programs are perfect for keeping updated and in touch with the latest practices in the sector. The programs have an excellent combination of academic excellence with a practical approach."*

PROGRAM PROFILES		AGES		ORIGIN	
● State Attorney	1%	● More than 37 years old	60%	● Asia	3%
● Top Management	18%	● Between 27 and 37 years old	40%	● Africa	6%
● In house lawyer	31%			● Central and South America	12%
● Private Practice lawyer	34%			● North America	17%
● Partner / Managing Partner	15%			● Europe	62%





# Faculty

The IE Law School faculty consists of internal professors, practicing lawyers and members of the public sector: scholars dedicated to teaching, researching and publishing books and articles; partners and lawyers from national and international firms, as well as major Law Firm directors: notaries, judges and state lawyers. We also have visiting faculty from the best law schools in the world.

Our purpose: To carry out classes while sharing experience and professional knowledge.

To learn more, visit:

[www.ie.edu/es/law-school/claustro-investigacion](http://www.ie.edu/es/law-school/claustro-investigacion)

[www.ie.edu/law](http://www.ie.edu/law)

# Centers of excellence

Through the centers of excellence, IE Law School enhances applied research to meet the specific needs of the legal world.



Cátedra José María Cervelló



Centro de Estudios Europeos / IE



Cátedra Jean Monnet

PEREZ-LLORCA

Cátedra Pérez-Llorca /  
IE de Derecho Mercantil

# IE Community

Taking on a master is a unique time in our students' life and we want to help them to make the most of their IE experience!

- **We provide support** to advise new students and to help them with all the paperwork necessary to study at IE, as well as with adaptation to Madrid life during the program.
- **Campus Life:** We help to maximize the IE experience by developing an engaged community based on the student body's diversity, extracurricular activities on campus and the Alumni Association. Africa Day, Global Village, IE Impact Weekend, Chinese New Year, Corporate Social Responsibility Forum and more than 200 clubs await you!
- In addition, we integrate students from their first day in our **Alumni Association**, so they can benefit from the networking opportunities among our more than 50,000 alumni worldwide, and enjoy more activities.



**Javier Amantegui Lorenzo**  
Partner at Clifford Chance  
IE Law School Professor

*"Ability to work, constructive solutions, criterion, impossible deadlines, flexibility, patience to work in teams, being understood when speaking, the ambition to improve, listening to the important things... This is what we ask of the young lawyers in our firms and the LLM programs at IE Law School helps them to achieve it."*





# Career enhancement

Whatever professional stage our students are at, our commitment is to help them develop a successful professional career.

A full integration of Careers and Alumni Department activities, along with the network of international offices ensures that these objectives are met: personalized advising, training and access to employment opportunities in a global environment, during the student's entire career.

During the first week of October, IE is the venue for its **Careers Fair**, with more than 100 companies and law firms. The event serves as an interface between leading companies, law firms and students.

Legal professionals recognize IE Law School's excellence and the high quality training students receive. They rely on our students year after year when hiring at their company or office.

To learn more, please visit:  
[www.ie.edu/law-school/careers/](http://www.ie.edu/law-school/careers/)



**Kristina Sukhotina**  
Executive LLM alumna  
Head of European Representative Office, Energoprom Group,  
Frankfurt am Main, Germany

*"After graduation I continued my work as a lawyer in a company where, after some time, I proposed a way to improve certain issues. The company believed in me and my suggestions, and empowered me to represent it in Europe. As a result of this change, plenty of new functions and objectives have come up. I learn every day, as my job has grown from legal advising to include responsibility for general management, sales and marketing."*



**Alejandro Artacho**  
International LLM alumnus,  
Spain Venture Lab 2013/14  
finalist and CEO of Spotahome

*"The Venture Lab complements perfectly well the studies because it gives you an entrepreneurship or business perspective that it is highly necessary in the currently changing Law industry. I highly believe that future lawyers will need an entrepreneurial mindset which IE provides helping its students to develop that innovative spirit."*

*In the business spirit at IE Law School, Juliana Velásquez (Colombia) and Carolina Larramendy (Argentina), two alumnae of the International LLM Program 2008-2009, have created Globalista SAS.*





# Admission process

The fundamental objective of the admissions process is to select people with high professional potential, not only excelling in their academic and professional curriculum but also in their interpersonal skills.

**Rolling Admission process, no deadline to apply.**

**Admission valid for 2 intakes**

## ONLINE APPLICATION FORM

[www.ie.edu/app](http://www.ie.edu/app)

Completed in the language of the chosen program.

Each LLM has specific requirements that can be viewed on the website or in the program brochure. Generally, we require letters of recommendation, certificates of language level, complete academic record, essays or cover letter, and payment of admission fees (125 €).

Candidates may choose to take the IEGat, LSAT, GMAT or GRE. The IEGat (Global IE Admissions Test) tests the ability of a candidate when making managerial decisions under pressure.

To register, <http://events.ie.edu/events>

\* Not required for the Master en Asesoría Jurídica de Empresas Part-time and Executive LLM.

We analyze in detail the information obtained through the application and the documents submitted and check whether candidates have the right profile for the master and will provide added value to their peers.

The interview can be in person at the IE Law School's campus or in one of our 27 offices worldwide. It can also be arranged online by Skype occasionally.

After the interview, the Admissions Committee will evaluate all aspects of the application and come to a final decision, and candidates will be formally notified by letter or e-mail.

# Financial aid

To promote diversity in the programs, the IE Foundation provides grants to fund students based on merit, achievement or academic excellence and necessity. IE also has agreements with major Spanish banks to provide attractive funding possibilities to students, allowing them to finance tuition fees and living expenses during the program.

To learn more about these options, visit IE's Financial Aid websites:  
[www.financialaid.ie.edu](http://www.financialaid.ie.edu)

## FINAL DECISION

The entire admissions process for IE Law School's Executive Education programs can be found on the following website: [www.ie.edu/executive-law-school](http://www.ie.edu/executive-law-school)





## IE'S GLOBAL PRESENCE

[www.ie.edu/oficinas](http://www.ie.edu/oficinas) • [www.ie.edu/law](http://www.ie.edu/law) • [www.ie.edu/eventos](http://www.ie.edu/eventos)

Please do not hesitate to contact the office nearest to you should you need any additional information. You can also contact us via [admissions.law@ie.edu](mailto:admissions.law@ie.edu)

### EUROPE • [europe@ie.edu](mailto:europe@ie.edu)

**France, Monaco** - *Paris*  
[france@ie.edu](mailto:france@ie.edu)

**Germany, Switzerland & Austria** - *Munich*  
[germany@ie.edu](mailto:germany@ie.edu)

**Italy, Croatia & Slovenia**  
[italia@ie.edu](mailto:italia@ie.edu)

**Portugal** - *Lisbon*  
[portugal@ie.edu](mailto:portugal@ie.edu)

**Russia & Ukraine** - *Moscow*  
[russia@ie.edu](mailto:russia@ie.edu)  
[ukraine@ie.edu](mailto:ukraine@ie.edu)

**Spain** - *Madrid & Segovia*  
[iespain@ie.edu](mailto:iespain@ie.edu)

**Turkey** - *Istanbul*  
[turkey@ie.edu](mailto:turkey@ie.edu)

**UK & Ireland** - *London*  
[uk@ie.edu](mailto:uk@ie.edu)

### NORTH AMERICA

**USA & Canada**  
- *Los Angeles*  
[westcoast@ie.edu](mailto:westcoast@ie.edu)

- *Miami*  
[southusa@ie.edu](mailto:southusa@ie.edu)

- *New York*  
[northeast@ie.edu](mailto:northeast@ie.edu)

### LATIN AMERICA

**Argentina & Uruguay** - *Buenos Aires*  
[argentina@ie.edu](mailto:argentina@ie.edu)  
[uruguay@ie.edu](mailto:uruguay@ie.edu)

**Brazil** - *Sao Paulo*  
[brasil@ie.edu](mailto:brasil@ie.edu)

**Chile** - *Santiago de Chile*  
[chile@ie.edu](mailto:chile@ie.edu)

**Colombia** - *Bogota*  
[colombia@ie.edu](mailto:colombia@ie.edu)  
[centroamerica@ie.edu](mailto:centroamerica@ie.edu)

**Ecuador** - *Quito*  
[ecuador@ie.edu](mailto:ecuador@ie.edu)

**Mexico City** - *Mexico*  
[mexico@ie.edu](mailto:mexico@ie.edu)

**Peru, Bolivia & Paraguay** - *Lima*  
[peru@ie.edu](mailto:peru@ie.edu)  
[bolivia@ie.edu](mailto:bolivia@ie.edu)  
[paraguay@ie.edu](mailto:paraguay@ie.edu)

**Venezuela** - *Caracas*  
[venezuela@ie.edu](mailto:venezuela@ie.edu)

### ASIA-PACIFIC • [asia-pacific@ie.edu](mailto:asia-pacific@ie.edu)

**Australia & New Zealand** - *Sydney*  
[australia@ie.edu](mailto:australia@ie.edu)

**China** - *Shanghai*  
[china@ie.edu](mailto:china@ie.edu)

**India & South Asia** - *Mumbai*  
[india@ie.edu](mailto:india@ie.edu)

**Japan** - *Tokyo*  
[japan@ie.edu](mailto:japan@ie.edu)

**Singapore & Southeast Asia** - *Singapore*  
[singapore@ie.edu](mailto:singapore@ie.edu)  
[southeastasia@ie.edu](mailto:southeastasia@ie.edu)

**South Korea** - *Seoul*  
[korea@ie.edu](mailto:korea@ie.edu)

### MIDDLE EAST / AFRICA • [mena@ie.edu](mailto:mena@ie.edu) / [africa@ie.edu](mailto:africa@ie.edu)

**Saudi Arabia**  
[saudi@ie.edu](mailto:saudi@ie.edu)

**UAE, Qatar, Bahrain, Kuwait, Iran & Oman** - *Dubai*  
[uae@ie.edu](mailto:uae@ie.edu)

**Nigeria** - *Lagos*  
[nigeria@ie.edu](mailto:nigeria@ie.edu)

### ADMISSIONS DEPARTMENT

María de Molina, 11  
Madrid, Spain

### [admissions.law@ie.edu](mailto:admissions.law@ie.edu)

T: + 34 915 689 610  
F: + 34 915 689 710

### OTHER WAYS TO GET IN TOUCH:

Please Note: The information contained in this brochure is subject to change. IE reserves the right to modify program content, regulations and policies when deemed appropriate and in the best interest of the IE community. Please contact the program management team should you have any queries.



